



PATH TO ZERO

Tangipahoa Parish Council Presentation

March 25, 2024



Agenda



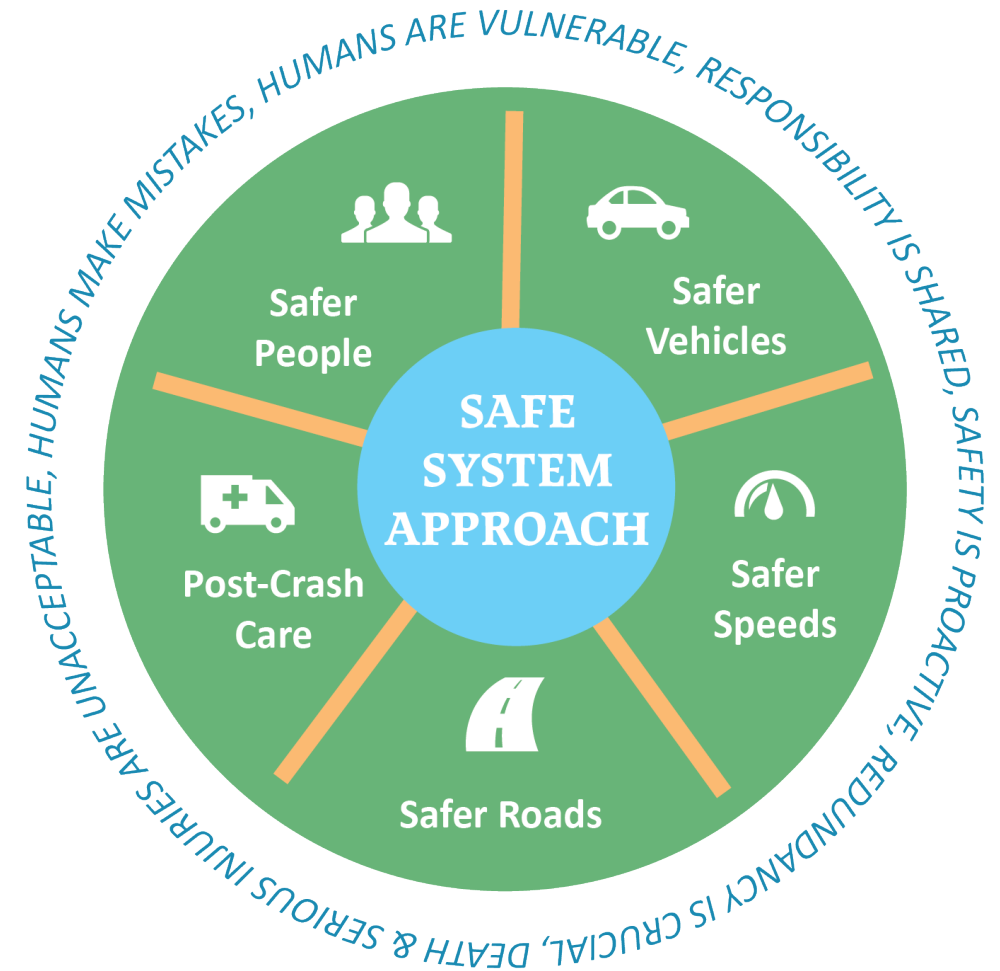
- 1 Path to Zero Plan Overview and Context
- 2 Leadership & Structure of Planning Process
- 3 Public Engagement & Equity
- 4 Safety Analysis & Project Identification
- 5 Public Health & Transparency
- 6 Next Steps

US DOT Safe Systems Approach



Over **42,000** people
died on America's
roads in 2021

The U.S. DOT adopted the
Safe System Approach as the
guiding paradigm to address
roadway safety and achieve
Vision Zero



By the Numbers - Tangipahoa



Crash Records from 2017-2021 were analyzed. Results are staggering.

Average Number of Crashes Every Year

4,429

Higher Severe/Fatal crash rate than the State

128 Lives Lost

Number of Severe Injury Collisions

182



Fatal & severe crashes involving alcohol

20%



“Crash” not “Accident”



Overview: Vision Zero



Vision Zero is a strategy to **eliminate *all* traffic fatalities and severe injuries**, while increasing safe, healthy, and equitable mobility for all by implementing safer road systems that protect all users.

TRADITIONAL APPROACH

Traffic deaths are *inevitable*
Perfect human behavior
Prevent *collisions*
Individual responsibility
Saving lives is *expensive*

VS

VISION ZERO

Traffic deaths are *preventable*
Integrate *human failing*
Prevent *fatal & severe crashes*
Shared responsibility
Saving lives is *not expensive*

Safe Streets and Roads for All (SS4A)



Purpose: Prevention of deaths and serious injuries on our roadways

Safety Action Plan

Implementation

Planning & Demonstration Grants

- For comprehensive safety action plans
- NORPC Planning Grant for Tangipahoa, St. John the Baptist and St. Tammany Parishes

Implementation Grants

- To implement projects and strategies identified in an Action Plan

“Path to Zero” Plan Components



Leadership Commitment

Safety Analysis



Planning Structure

Projects and Strategies



Public Engagement

Policy and Process Change



Equity Considerations

Progress and Transparency



Leadership Commitment & Planning Structure



- A public commitment to the vision statement by a high-ranking official or governing body is required for implementation fund eligibility

One Plan, One Vision



MANDEVILLE
A Historic Lakefront Community

Town of
Roseland



Example Commitments

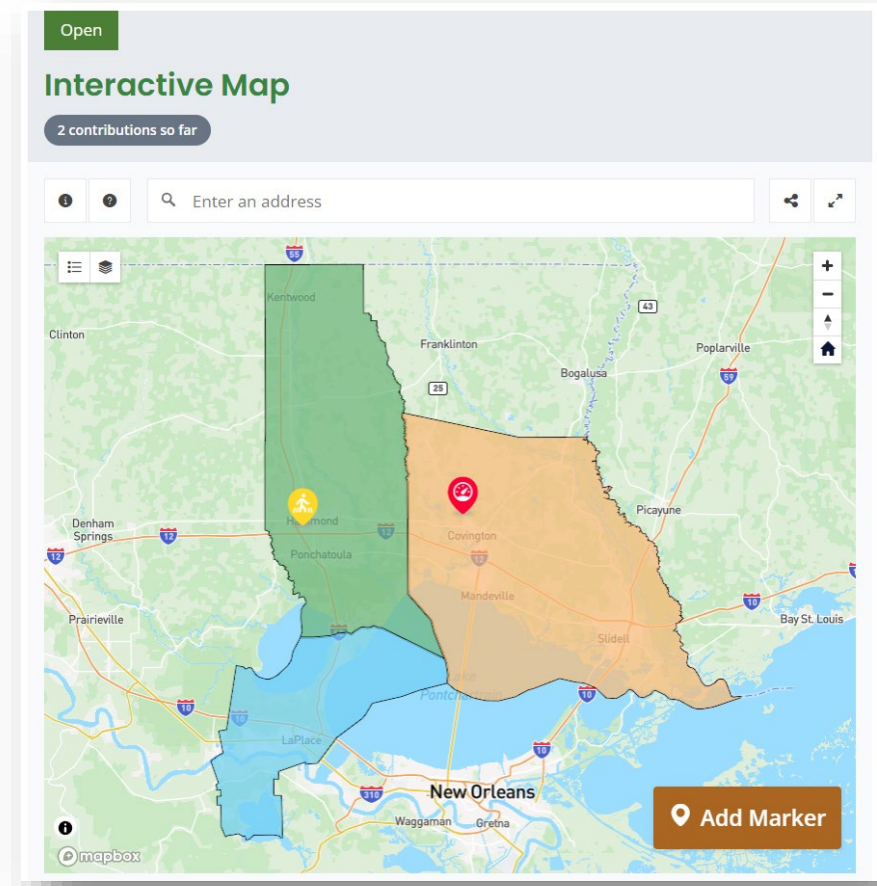


- **Cities and local governments across the nation (and the world) have made commitments to vision zero**
 - **Orlando, FL:** Our Vision Zero mission is to eliminate traffic fatalities and serious injuries within the city by 2040
 - **El Paso, TX:** We pledge to incorporate the Vision Zero Action Plan guiding principles, strategies, and priorities into everything our departments do in order to reach zero traffic deaths and severe injuries by 2050.
 - **Hoboken, NJ** had a vision zero executive order in 2019 and a vision zero plan in 2021. 7 years w/ no traffic deaths!

Public Engagement & Equity



- On-line Engagement
- In Person Engagement
- Specifically want to reach people disproportionately impacted and vulnerable road users
 - Minorities
 - Low Income
 - People without vehicles
 - People who walk and bike



Tangipahoa In-Person Events



**Check the website to learn about
upcoming in-person events in April**

<https://norpcsafeststreets.mysocialpinpoint.com/>



Safety Analysis & Project Strategies

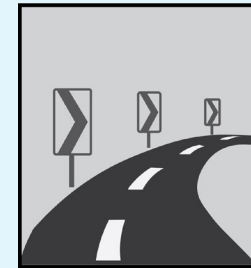


Strategy development: Existing conditions will be used to create project lists

Risk Identification



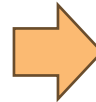
Intervention Development



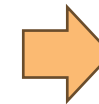
High Injury Network (HIN)
segments &
intersections



Location conditions
(speed limits,
crash factors,
etc.)



Policy strategies
and structural
countermeasures



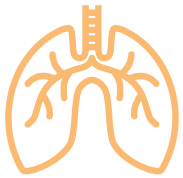
Location
specific list of
projects



Public Health & Non-Infrastructure Recommendations



What does public health have to do with transportation?



Air
quality



Physical
activity



Injuries and
deaths



Risk perception
and behavior

A change in safety culture requires understanding people's
attitudes, beliefs, and behaviors

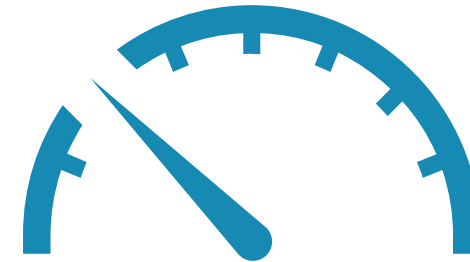


Policy and Transparency



POLICY AND PROCESS CHANGE

- Updating guidelines, regulations, and standards that affect traffic safety



PROGRESS AND TRANSPARENCY

- Measuring progress towards achieving measurable goals over time



Schedule



Project Initiation

The project kicked off in November 2023



Existing Conditions Analysis

Review of data sets, previous plans, existing policies, safety analysis, demographic and land use analysis – November 2023 through March 2024



Public Engagement

Ongoing. In Person Events in April 2024; Web-based engagement tools through End of April



Identification of Projects, Programs, and Transparency Tools

Identify and Prioritize Projects and Programs to address needs, determine tools for monitoring progress – April through July 2024



Draft and Final Plan

August through November 2024

Contact

Nelson Hollings, NORPC
nhollings@norpc.org

Jonathan Gambino, Volkert
Jonathan.Gambino@volkert.com

Ellen Soll, ATG | DCCM
esoll@emailatg.com

VOLKERT



Disclaimer: The data herein, including but not limited to geographic data, tabular data, analytical data, electronic data structures or files, are provided "as is" without warranty of any kind, either expressed or implied, or statutory, including, but not limited to, the implied warranties or merchantability and fitness for a particular purpose. The entire risk as to the quality and performance of the data is assumed by the user. No guarantee of accuracy is granted, nor is any responsibility for reliance thereon assumed. In no event shall the Regional Planning Commission for Jefferson, Orleans, Plaquemines, St. Bernard, St. Charles, St. John the Baptist, St. Tammany, and Tangipahoa Parishes (RPC) be liable for direct, indirect, incidental, consequential, or special damages of any kind, including, but not limited to, loss of anticipated profits or benefits arising out of use of or reliance on the data. The RPC does not accept liability for any damages or misrepresentation caused by inaccuracies in the data or as a result of changes to the data caused by system transfers or other transformations or conversions, nor is there responsibility assumed to maintain the data in any manner or form. These data have been developed from the best available sources. Although efforts have been made to ensure that the data are accurate and reliable, errors and variable conditions originating from physical sources used to develop the data may be reflected in the data supplied. Users must be aware of these conditions and bear responsibility for the appropriate use of the information with respect to possible errors, scale, resolution, rectification, positional accuracy, development methodology, time period, environmental and climatic conditions and other circumstances specific to these data. The user is responsible for understanding the accuracy limitations of the data provided herein. The burden for determining fitness for use lies entirely with the user. The user should refer to the accompanying metadata notes for a description of the data and data development procedures. Although these data have been processed successfully on computers at the RPC, no guarantee, expressed or implied, is made by RPC regarding the use of these data on any other system, nor does the act of distribution constitute or imply any such warranty. Distribution of these data is intended for information purposes and should not be considered authoritative for navigational, engineering, legal and other site-specific uses. Data was prepared by Geographic Information System (GIS) professionals, not by licensed professional land surveyors or engineers.

